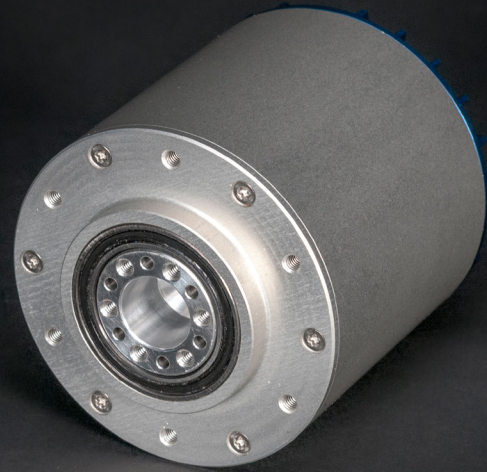


ANYdrive robot joint

Integrated, robust, torque controllable



Fully integrated

ANYdrive consists of a powerful brush-less motor, custom spring, backlash-free gear, high-precision encoders, and efficient power electronics.

Absolute position sensing

Precise absolute encoders make repeated calibration of the joints unnecessary.

Programmable controller

Custom control algorithms can be implemented through the open API (coming soon).

Accurate position & torque control, impact robustness

The intergrated spring enables accurate torque tracking while protecting the gear from impacts.

High load bearing & hollow shaft

The robust design and hollow shaft allow for compact robot design and optimal cable routing.

Ingress-protection IP66

The ANYdrive is completely sealed against dust and water ingress.



ANYdrive is a complete robot joint: It enables building robots of any form with minimal complexity and maximal performance.



Example applications

Peak/nominal power	720 W / 240 W	Absolute joint position	17-bit, $\lt;0.025^\circ$
Nominal voltage	48 VDC	Joint output torque resolution	$\lt;0.1\text{ Nm}$
Peak/nominal torque	40 Nm / 15 Nm	Torque control bandwidth	>60 Hz
Peak joint velocity	114 rpm (12 rad/s)	Backlash	$\pm 0.02^\circ$
Dimensions (L x D)	93 x 80 mm	Control modes	Position, torque, impedance, velocity, or current control
Mass	0.9 kg	Communication	CAN 1 Mbit/s, CANopen protocol, ROS integration
Max. bending moment	100 Nm		
Hollow shaft diameter	11 mm		